



Xingang House

TOWING HOUSE COMPREHENSIVE PICTURE ALBUM



COMPANY PROFILE

Guangzhou Xingang Steel Structure Housing Co., Ltd. is a professional steel structure company, located in Guangzhou, Guangdong Province. We have trading branches in Australia and Foshan, China.

For ten years, we have provided OEM services to many international brands in the residential construction sector. Today, Xingang has the most complete series of light steel housing products and container products, including light steel villa, light steel homestay, light steel trailer house, light steel gas station, space capsule, apple cabin, houseboat, container residence, container office, container restaurant, etc. Our factory covers an area of 30,000 square meters. Products are exported all over the world.

All of our products are ISO certified. Every product is quality verified before delivery and detailed inspection is carried out before delivery. Make sure the structure and exterior are intact. We will make sure that the products are not damaged during transportation.

We have established many high-profile cases in Australia, the United States, the Philippines, Israel, Nigeria and Japan. The annual output value reaches 50 million, our technology is mature, the price is competitive.



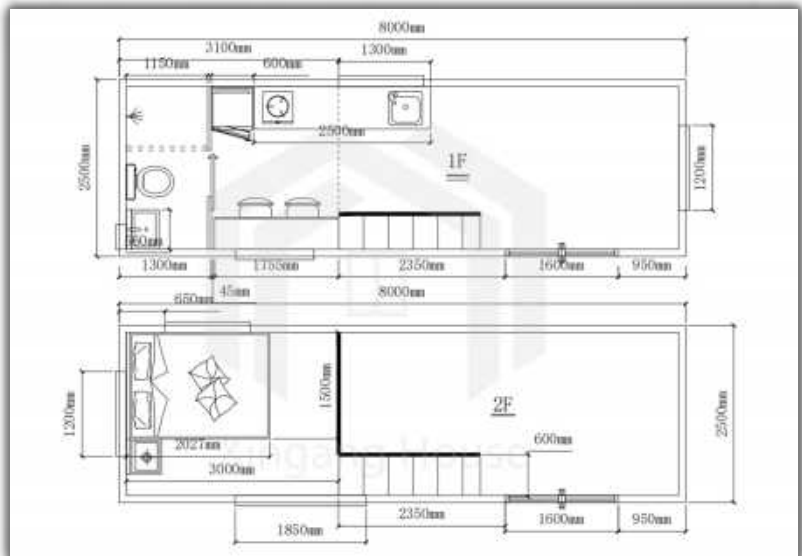
TH-001

CONVENTIONAL SIZE



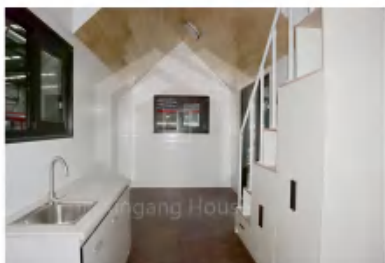
Product information

- Product size :8000*2500*4200mm
- Living area :20 square meters
- Load capacity :4 tons
- Layout :1 living room, 1 bedroom, 1 kitchen and 1 bathroom
- Application scenarios :hotels, homestays, cultural tourism rooms
- Product delivery method :disassembly/assembly



TH-001

PRODUCT PICTURE APPRECIATION



TH-001

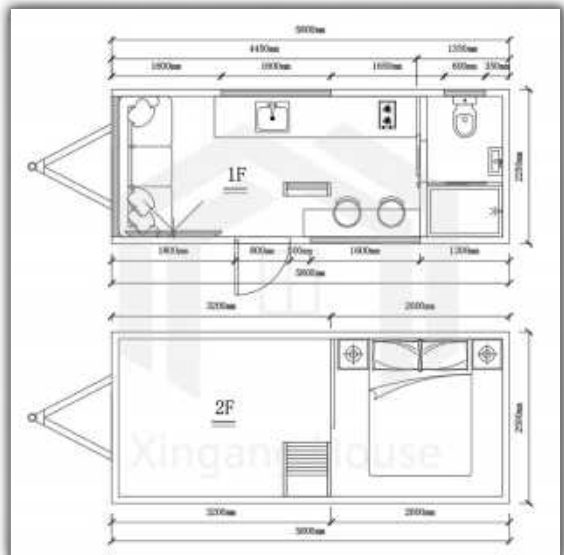
MINI VERSION



Product information

- Product size :5800*2250*4200mm
- Living area :13.05 square meters
- Load capacity :2 tons
- Layout :1 living room, 1 bedroom, 1 kitchen and 1 bathroom
- Application scenarios: hotels, homestays, cultural tourism rooms
- Product delivery method: disassembly/assembly

LAYOUT DIAGRAM



TH-001

PRODUCT PICTURE APPRECIATION

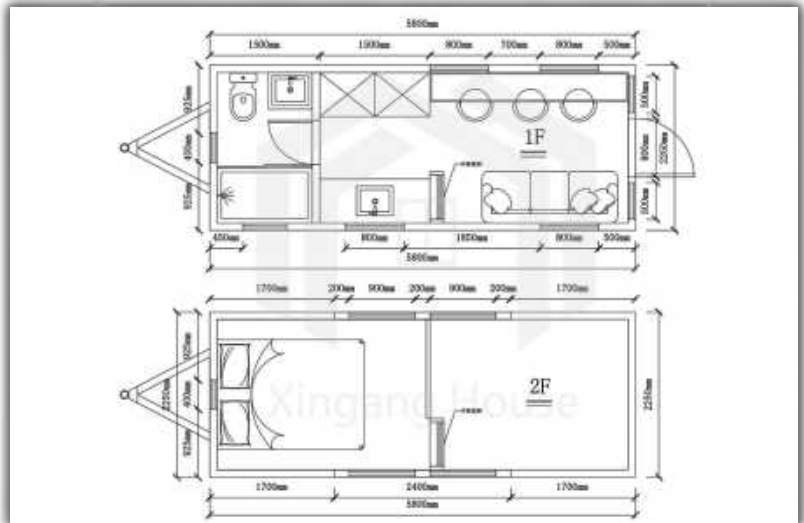


TH-002

CONVENTIONAL SIZE

Product information

- Product size :5800*2250*4200mm
- Living area :13 square meters
- Load capacity :2 tons
- Layout :1 living room, 1 bedroom, 1 kitchen and 1 bathroom
- Application scenarios: hotels, homestays, cultural tourism rooms
- Product delivery method: disassembly/assembly



TH-002

PRODUCT PICTURE APPRECIATION



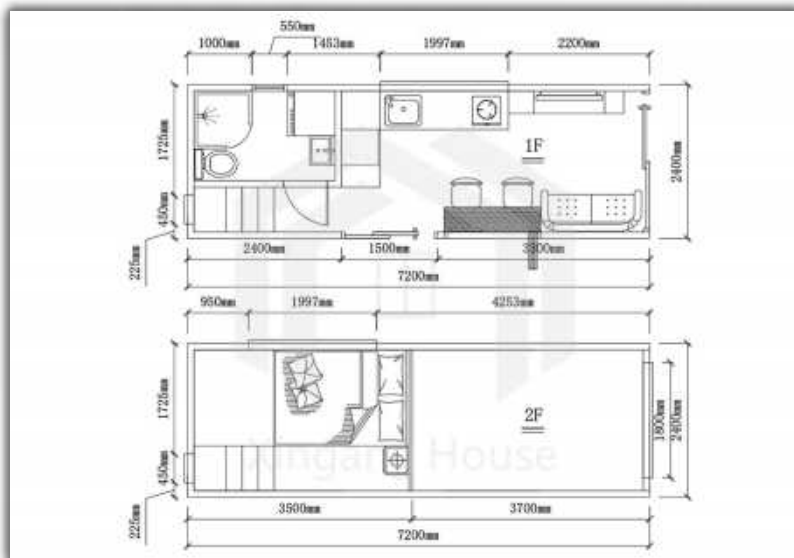
TH-003

CONVENTIONAL SIZE



Product information

- Product size :7200*2400*4200mm
- Layout :1 living room, 1 bedroom, 1 kitchen and 1 bathroom
- Living area :17.28 square meters
- Application scenarios: hotels, homestays, cultural tourism rooms
- Load capacity :4 tons
- Product delivery method: disassembly/assembly



TH-003

PRODUCT PICTURE APPRECIATION

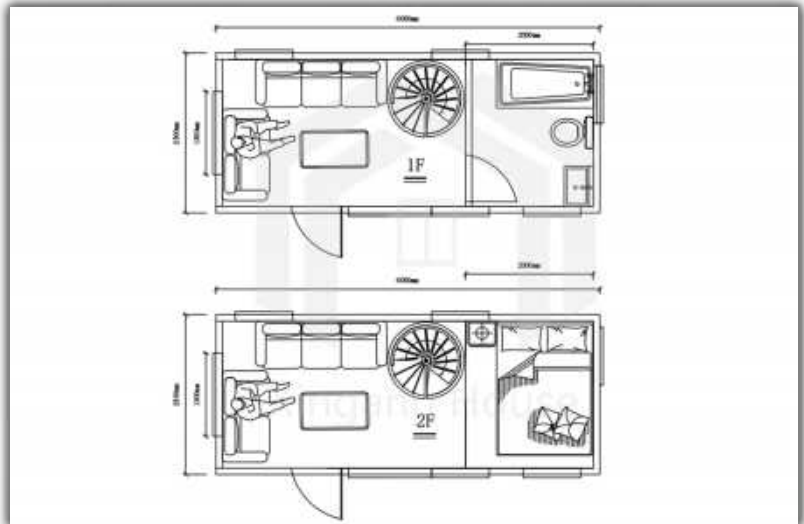


TH-004

CONVENTIONAL SIZE

Product information

- Product size :5800*2250*4200mm
- Layout :1 living room, 1 bedroom, 1 bathroom
- Living area :13 square meters
- Application scenarios: hotels, homestays, cultural tourism rooms
- Load capacity :2 tons
- Product delivery method: disassembly/assembly



TH-004

PRODUCT PICTURE APPRECIATION



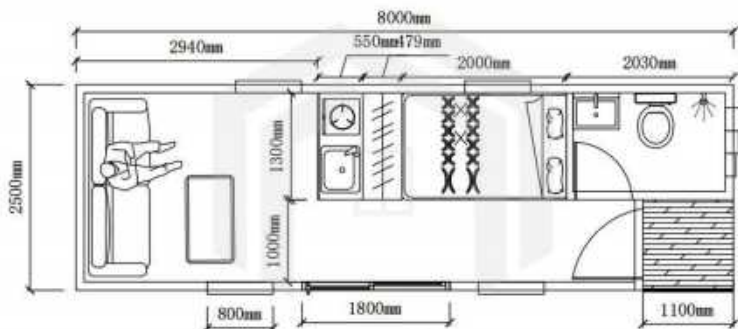
TH-005

CONVENTIONAL SIZE



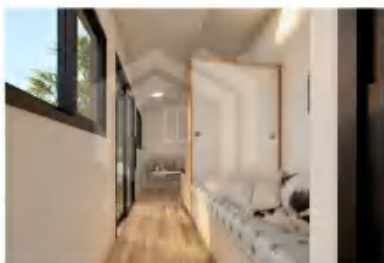
Product information

- Product size :8000*2500*3100mm
- Living area :20 square meters
- Load capacity :4 tons
- Layout :1 living room, 1 bedroom, 1 kitchen and 1 bathroom
- Application scenarios: hotels, homestays, cultural tourism rooms
- Product delivery method: disassembly/assembly



TH-005

PRODUCT PICTURE APPRECIATION

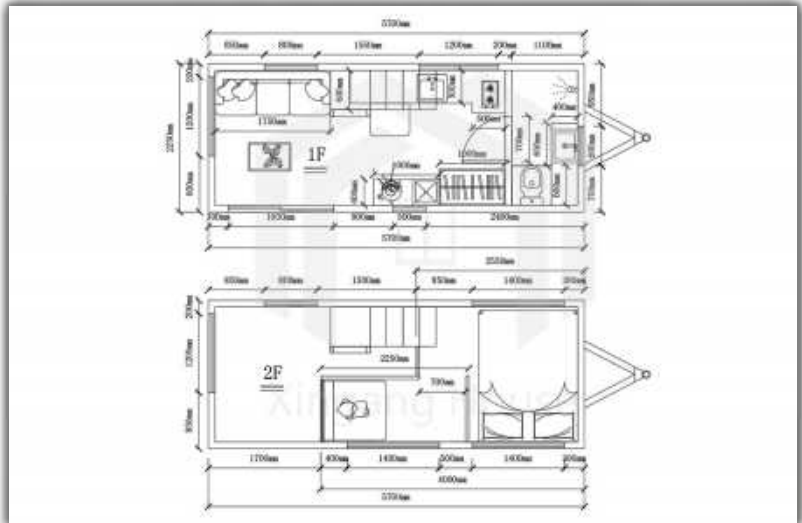


TH-006

CONVENTIONAL SIZE

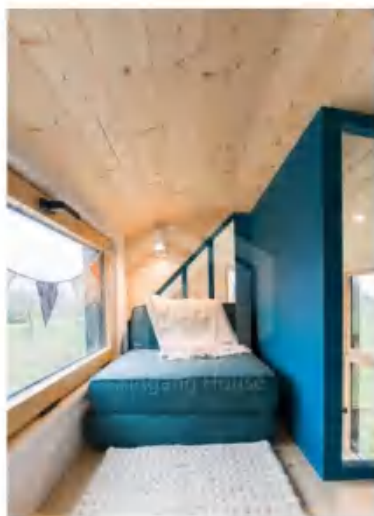
Product information

- Product size :5700*2250*4200mm
- Layout :1 living room, 1 bedroom, 1 kitchen and 1 bathroom
- Living area :12.8 square meters
- Application scenarios: hotels, homestays, cultural tourism rooms
- Load capacity :2 tons
- Product delivery method: disassembly/assembly



TH-006

PRODUCT PICTURE APPRECIATION

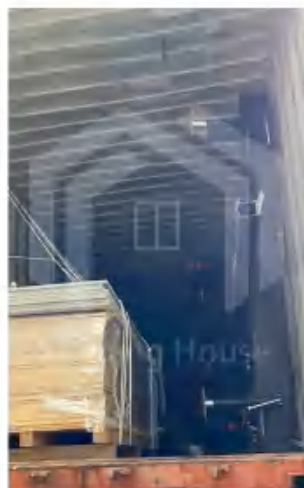


TRANSPORT



Mode of transport

There are two modes of transport, one is disassembly transport, and the other is package transport.



ORDERING PROCESS

Create design, manufacturing,
assembly one-stop full system services



Special personnel docking

Dedicated service connection
to identify your needs



Determine the scheme

Determine the plan and quotation



Contract signing

Sign the contract details



On-demand customization

Provide professional design
solutions on demand



Deepening design

Deepen the design and further
customize the program



Factory production

Complete the production within the
time stipulated in the contract



Logistics distribution

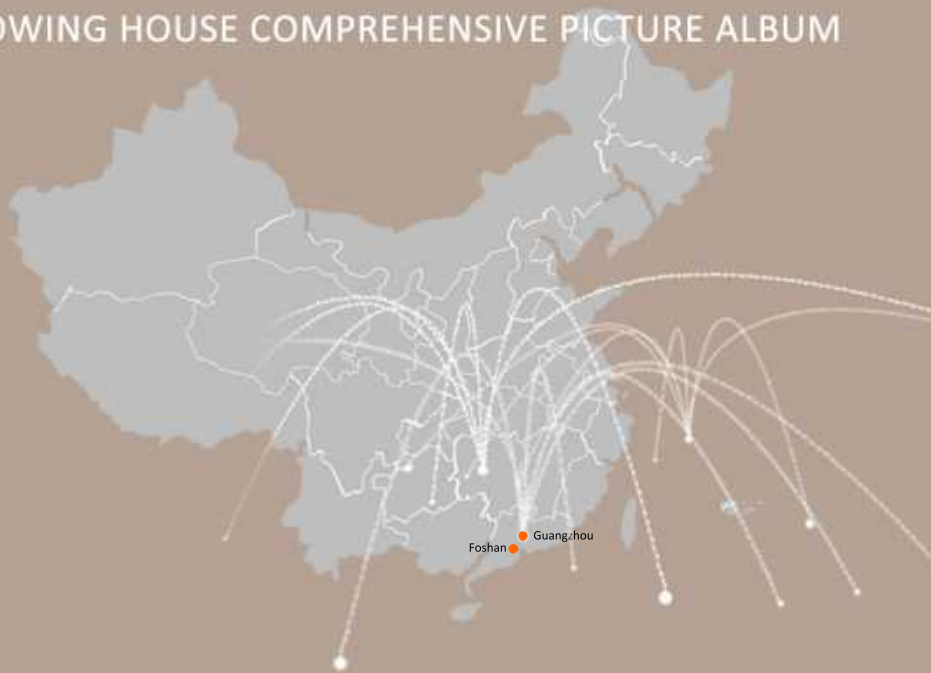
Confirm the delivery time, arrange the
logistics truck delivery to the customer's
designated location



Professional installation

Professional workers, safe installation

TOWING HOUSE COMPREHENSIVE PICTURE ALBUM



Headquarters (Foshan Factory) Branch (Guangzhou Office)

Guangzhou Xingang Steel Structure Housing Co., LTD

www.steelmarkhouse.com



Instagram